

Fabrics collection 2018 - 2022

NEW Soltis Proof W88
for PERGOLA SUNRAIN

Protection against sun

Create your awning with individual fabrics from LEINER and transform your terrace into an outside living room. Scroll through our collection and be inspired by our new fabric designs. The present LEINER awning fabrics offer a wide range for every requirement and sense of style.

But our fabrics can do a lot more: Thanks to a sun protection factor between UV 20 and UV 80, the modern high-tech fabrics protect against dangerous UV-rays. Explanation: With a UV 80 sun protection factor you can stay in the sun 80 times longer than unprotected.

Sun is pleasure. Everybody needs the light of the sun for a living. But unfortunately too much sun is harmful. LEINER fabrics offer safe protection. Enjoy your terrace without regret – for many wonderful summers.

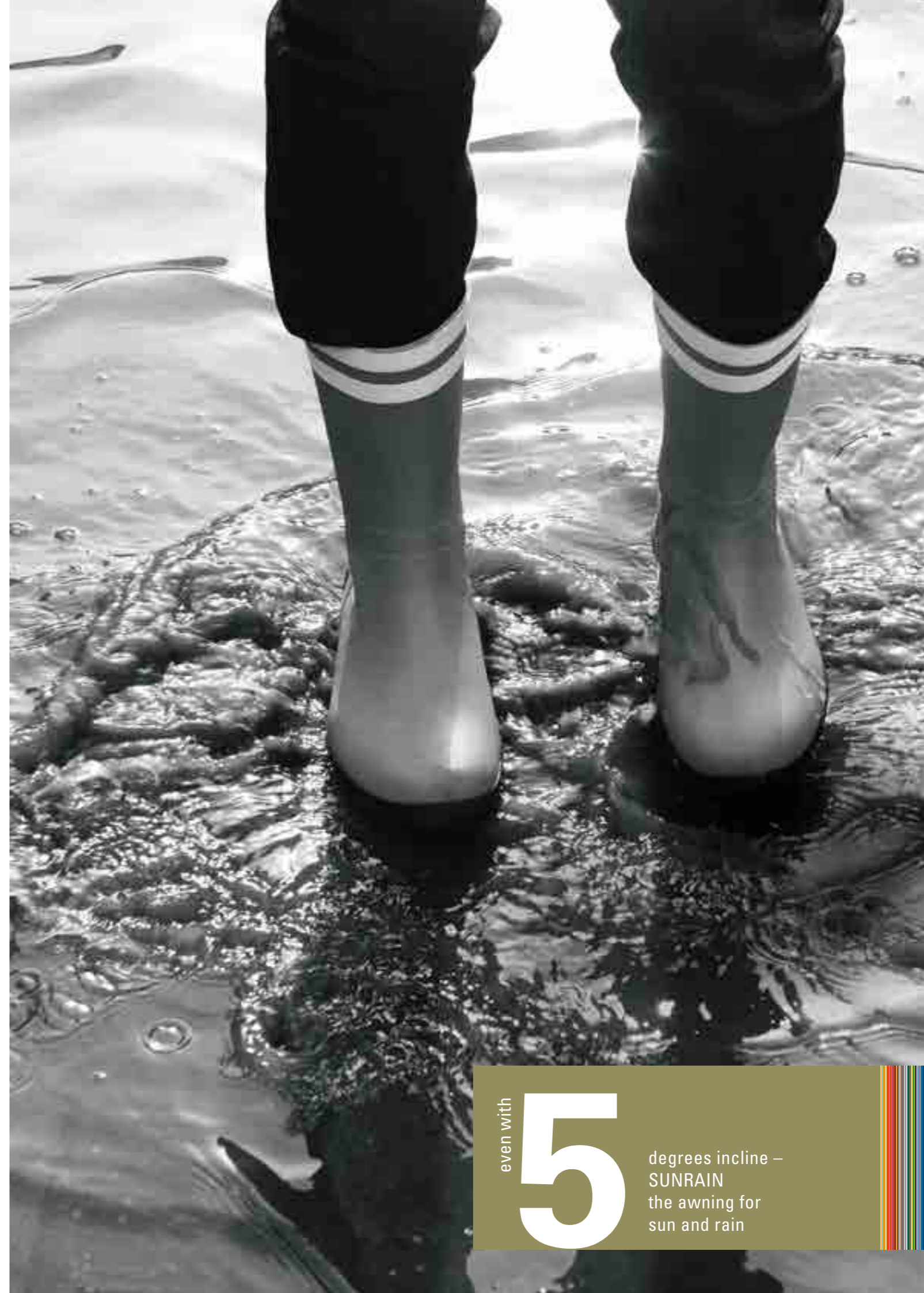
Staying up to **80** times longer in the sun than unprotected

Protection against rain

Conventional awnings are just limited suitable when it rains. Furthermore, for a secure water drain, the incline has to be large enough. But sometimes you want to stay outside – in sunny and rainy hours. For example, because the party is simply more fun on the terrace.

Thanks to SUNRAIN, the patented awning for sun and rain, you can enjoy your terrace under nearly all weather conditions. The absolutely watertight high-tech fabric made of PVC make the rain simply drip off. Due to the special construction of the SUNRAIN awning, a controlled drainage is realized, even at low inclines.

Staying outside – also by instable weather. Enjoy your terrace on sunny and rainy days. Inhale this special taste of summer, you can only smell on rainy days. Best protected by your SUNRAIN awning.



even with

5

degrees incline –
SUNRAIN
the awning for
sun and rain

Focus on environment

We live the environmental idea. With an environmental friendly and resource protecting production. Thanks to recyclable materials. And of course, with innovative, long lasting products – made for many years of terrace enjoyment.

Our products also help to save energy in everyday use. Thanks to innovative awning systems and fabrics, the heating of the interiors can be contained significantly even in summer – for a sense of well-being even without AC.

Protection from too much sun – not just talking about your terrace. Thanks to an awning, your interiors stay much cooler. For a pleasant climate even on hot summer days.



111

million tons CO₂ saving per year, thanks to sun protection*

From start to finish made with a precise workmanship, our fabrics remain permanently beautiful. From the spinning process to the confection, we treat our fabrics with greatest attention. To achieve a state of quality which successfully pays off for many years.

High-tech fabrics

Self-cleaning included

After weaving our polyacrylic and polyester fabrics are finished with a protective layer. This special impregnation prevents from water, moisture as well as dirt and supports the self-cleaning effect – the water just drips off, like known from nature.

Thoroughly colour fast

Our high-quality polyacrylic and polyester fabrics are made from 100 % solution dyed materials. In other words, each yarn is coloured from the surface to the core. The result: brilliant colours with a strong brightness. And thanks to the UV resistance, they are colour fast even after years.



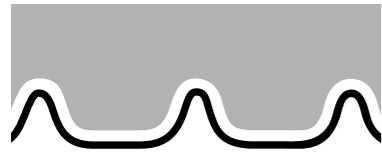
2 big advantages:
Impregnation and
colour fastness

Valance forms

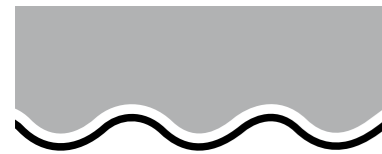
Choose from 4 different valance forms. Dependend of the type of awning, the valance is a standard or an option.



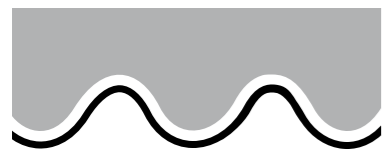
straight



angular



wavy



curved

Valance's edging tapes

The edging tapes are made from high-quality acrylic yarn. Choose as you please. Either as a contrast or matching the colour of your awning's fabric. You will find our recommendation on the pages with the fabric designs.



Fabric collection. Table of contents

Item no.	Material	p.	Item no.	Material	p.	Item no.	Material	p.	Item no.	Material	p.	Item no.	Material	p.
11	PAC	28	315 711	PAC	35	364 053	PAC	37	56	PAC	28	8929/400	TS	46
12	PAC	28	320 B70	PAC	41	364 064	PAC	37	6002/100	TSL	42	8971/497	TS	46
13	PAC	40	320 180	PAC	30	370 203	SG	43	6005/100	TSL	42	932	PAC	28
1313/1	PAC	29	320 227	PAC	30	370 402	SG	43	6011/100	TSL	42	937	PAC	36
1330/501	PAC	20	320 235	PAC	41	370 519	SG	42	6012/100	TSL	43	939/94	PAC	37
1330/502	PAC	20	320 254	PAC	30	370 602	SG	43	6015/100	TSL	42	94/15	PAC	35
1330/503	PAC	20	320 328	PAC	31	370 703	SG	43	6015/101	TSL	42	943/72	PAC	31
1330/504	PAC	20	320 452	PAC	30	370 803	SG	43	6015/151	TSL	42	944/5	PAC	41
1330/505	PAC	21	320 573	PAC	41	370 804	SG	43	6016/115	TSL	42	944/926	PAC	29
1330/506	PAC	20	320 674	PAC	41	370 902	SG	43	6052/100	TSL	42	967/926	PAC	36
1330/507	PAC	21	320 678	PAC	37	370 903	SG	43	6055/100	TSL	43	97	PAC	35
1330/508	PAC	20	320 679	PAC	30	385 101	LUM	17	6073/100	TSL	42	986/15	PAC	34
1330/510	PAC	21	320 705	PAC	37	385 201	LUM	17	6079/100	TSL	42	986/727	PAC	34
1330/512	PAC	21	320 706	PAC	37	385 301	LUM	17	6084/100	TSL	42	PC0001	PC	45
1330/513	PAC	21	320 758	PAC	31	385 802	LUM	17	6097/100	TSL	42	PC0006	PC	45
15	PAC	34	320 923	PAC	34	385 803	LUM	17	6227/179	TSL	43	PC0111	PC	45
15/14	PAC	34	320 926	PAC	41	385 901	LUM	17	6231/197	TSL	42	PC0165	PC	44
15/79	PAC	34	320 932	PAC	29	4015/61	PAC	34	6233/124	TSL	42	PC0168	PC	45
16	PAC	40	320 937	PAC	34	4015/91	PAC	34	6236/190	TSL	42	PC0199	PC	45
242	PAC	35	320 954	PAC	36	407/11	PAC	28	6239/111	TSL	43	PC0236	PC	44
30A 554	PAC	29	320 955	PAC	41	407/14	PAC	35	6239/115	TSL	43	PC0237	PC	44
30A 774	PAC	29	320 974	PAC	36	407/8	PAC	28	6239/116	TSL	43	PC0239	PC	44
30A 778	PAC	31	320 990	PAC	35	407/9	PAC	28	6239/185	TSL	43	PC0241	PC	44
314 018	PAC	34	320 991	PAC	35	407/926	PAC	35	6243/112	TSL	43	PC0255	PC	44
314 028	PAC	34	320 992	PAC	35	407/94	PAC	34	6247/108	TSL	42	PC0331	PC	44
314 030	PAC	34	320 993	PAC	35	4215/15	PAC	35	6248/190	TSL	42	PC0377	PC	44
314 033	PAC	35	338 323	LUM	31	426	PAC	28	633/79	PAC	37	PC0378	PC	44
314 034	PAC	28	338 612	LUM	40	5001/12	PAC	30	636/12	PAC	30	PC0400	PC	44
314 045	PAC	28	338 620	LUM	16	5011/11	PAC	31	639/99	PAC	37	PC0405	PC	44
314 050	PAC	40	338 621	LUM	16	5167/12	PAC	30	6873/197	TSL	42	PC0496	PC	44
314 051	PAC	40	338 622	LUM	16	5173/12	PAC	29	6929/100	TSL	42	PC0497	PC	44
314 061	PAC	40	338 624	LUM	16	5228/79	PAC	37	72	PAC	28	PC0510	PC	45
314 072	PAC	35	338 626	LUM	16	5231/12	PAC	29	73	PAC	28	PC0511	PC	45
314 080	PAC	34	338 639	LUM	14	5374	PAC	36	75	PAC	40	PC0544	PC	44
314 085	PAC	35	338 641	LUM	15	5396/73	PAC	24	770/55	PAC	30	PC0814	PC	45
314 362	PAC	40	338 642	LUM	15	5396/78	PAC	25	773/94	PAC	30	PC0821	PC	44
314 364	PAC	34	338 643	LUM	14	5396/930	PAC	25	782/14	PAC	35	PC1093	PC	44
314 396	PAC	40	338 644	LUM	14	5396/97	PAC	25	79	PAC	35	SO888102	SO	45
314 402	PAC	35	338 655	LUM	14	5397/12	PAC	24	8015/400	TS	46	SO881103	SO	45
314 403	PAC	35	338 656	LUM	14	5397/930	PAC	25	8015/401	TS	46	SO888861	SO	45
314 583	PAC	28	338 657	LUM	15	5397/97	PAC	25	8027/400	TS	46	SO882171	SO	45
314 638	PAC	35	338 658	LUM	15	5398/12	PAC	24	8073/400	TS	46	SO882047	SO	45
314 723	PAC	34	338 659	LUM	15	5398/73	PAC	24	8079/400	TS	46	SO968102	SO	45
314 724	PAC	28	338 660	LUM	15	5398/78	PAC	25	8090/400	TS	46	SO961103	SO	45
314 814	PAC	35	338 662	LUM	14	5398/930	PAC	25	8097/400	TS	46	SO968861	SO	45
315 052	PAC	28	338 665	LUM	14	5398/97	PAC	25	8097/415	TS	46	SO962171	SO	45
315 352	PAC	35	338 667	LUM	15	5399/107	PAC	36	8197/415	TS	46	SO962047	SO	45
315 404	PAC	35	338 801	LUM	36	5399/15	PAC	36	873/15	PAC	25			
315 420	PAC	40	338 802	LUM	36	5399/55	PAC	31	873/151	PAC	25			
315 422	PAC	40	338 812	LUM	35	5399/73	PAC	31	873/73	PAC	24			
315 602	PAC	40	35	PAC	28	5399/94	PAC	36	873/78	PAC	25			

Material: PAC= Polyacrylic | LUM = LUMERA | TSL = TEMPOTEST STARLIGHT | SG = SATTLER GROOVE | TS = TEMPOTEST STARSCREEN | PC = Précontraint | SO = Soltis Proof W88/W96

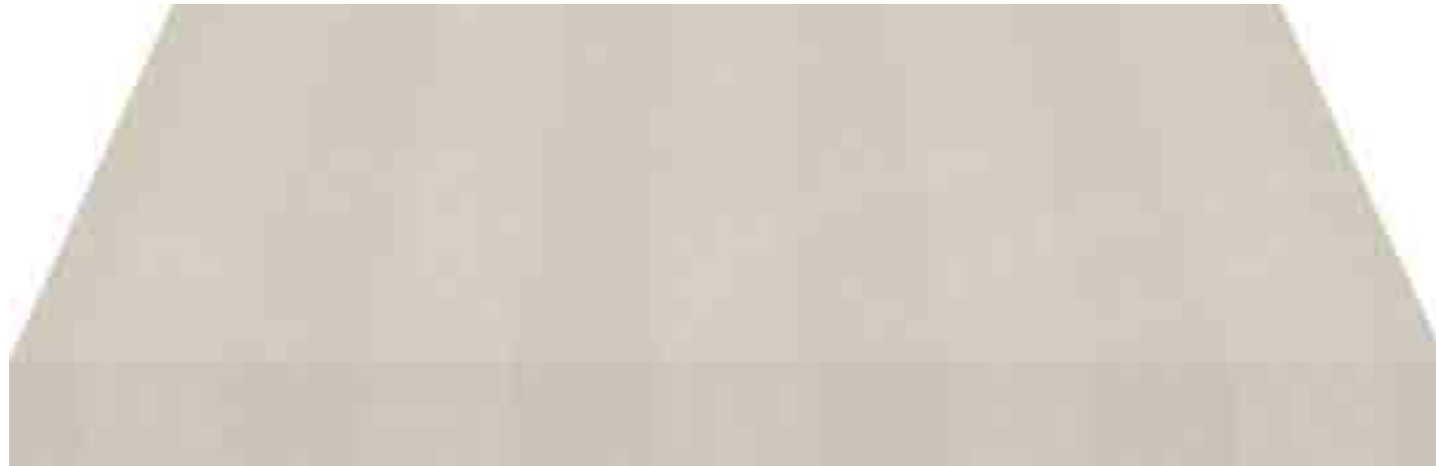
LAND- SCAPE

The wave's tracks in the beige sand, seeding rows drawn with the pough brown in brown, ashen lava streams – the linear structures of natural landscapes were the source of inspiration for our Landscape fabric designs. Tone in tone, the woven stripes convey calm and elegance. Thanks to the gentle coordination of the colours the Landscape design fits very well modern buildings as well as classical one- or two-family houses. A graceful tonality, that breathes harmony and balance. As a scenic landscape.



Thanks to the premium awning fabric LUMERA from Sattler, our Landscape designs are brilliant in colour and offer best brightness. In contrary to tradional acrylic fibers, the innovative Clean-Brilliant-Acrylic fibers are

completely flat. This and a special treatment create the self-cleaning-effect: Due the smooth fiber, less dirt sticks to the fabric than on conventional acrylic awining fabrics. This is verifiably.



Item no.: 338 656 | Recommended edging tape: 79 | Fabric width: 120 cm



Item no.: 338 657 | Recommended edging tape: 12 | Fabric width: 120 cm



Item no.: 338 662 | Recommended edging tape: 15/1 | Fabric width: 120 cm



Item no.: 338 639 | Recommended edging tape: 14 | Fabric width: 120 cm



Item no.: 338 667 | Recommended edging tape: 54 | Fabric width: 120 cm



Item no.: 338 658 | Recommended edging tape: 84 | Fabric width: 120 cm



Item no.: 338 643 | Recommended edging tape: 79 | Fabric width: 120 cm



Item no.: 338 644 | Recommended edging tape: 300 815 | Fabric width: 120 cm



Item no.: 338 642 | Recommended edging tape: 79 | Fabric width: 120 cm



Item no.: 338 660 | Recommended edging tape: 5 | Fabric width: 120 cm



Item no.: 338 655 | Recommended edging tape: 300 815 | Fabric width: 120 cm



Item no.: 338 665 | Recommended edging tape: 24 | Fabric width: 120 cm



Item no.: 338 641 | Recommended edging tape: 94 | Fabric width: 120 cm



Item no.: 338 659 | Recommended edging tape: 87 | Fabric width: 120 cm



Item no.: 338620 | Recommended edging tape: 926 | Fabric width: 120 cm



Item no.: 385101 | Recommended edging tape: 15 | Fabric width: 120 cm



Item no.: 338621 | Recommended edging tape: 300815 | Fabric width: 120 cm



Item no.: 385201 | Recommended edging tape: 58 | Fabric width: 120 cm



Item no.: 338624 | Recommended edging tape: 54 | Fabric width: 120 cm



Item no.: 338622 | Recommended edging tape: 84 | Fabric width: 120 cm



Item no.: 385301 | Recommended edging tape: 58 | Fabric width: 120 cm



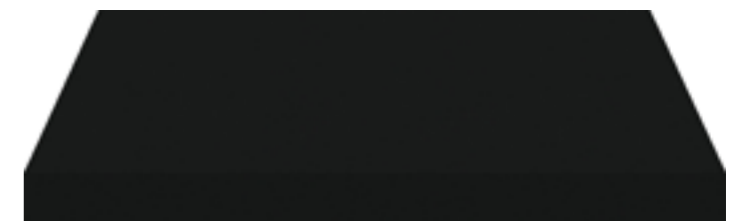
Item no.: 385802 | Recommended edging tape: 79 | Fabric width: 120 cm



Item no.: 338626 | Recommended edging tape: 94 | Fabric width: 120 cm



Item no.: 385803 | Recommended edging tape: 94 | Fabric width: 120 cm



Item no.: 385901 | Recommended edging tape: 24 | Fabric width: 120 cm

Wild silk



The nubby irregular structure of wild silk enchants with its individuality and unconventional character. Thereby exquisiteness and value are shown with a natural, unique impression. Awning cloths from the Wild Silk collection impress with their elemental look and haptic feel. The balanced soft colours are the aesthetic counterpart to the noble surface texture.





Item no.: 1330/501 | Recommended edging tape: 79 | Fabric width: 120 cm



Item no.: 1330/502
Recommended edging tape: 79
Fabric width: 120 cm



Item no.: 1330/503
Recommended edging tape: 12
Fabric width: 120 cm



Item no.: 1330/505 | Recommended edging tape: 79 | Fabric width: 120 cm



Item no.: 1330/507
Recommended edging tape: 73
Fabric width: 120 cm



Item no.: 1330/513
Recommended edging tape: 73
Fabric width: 120 cm



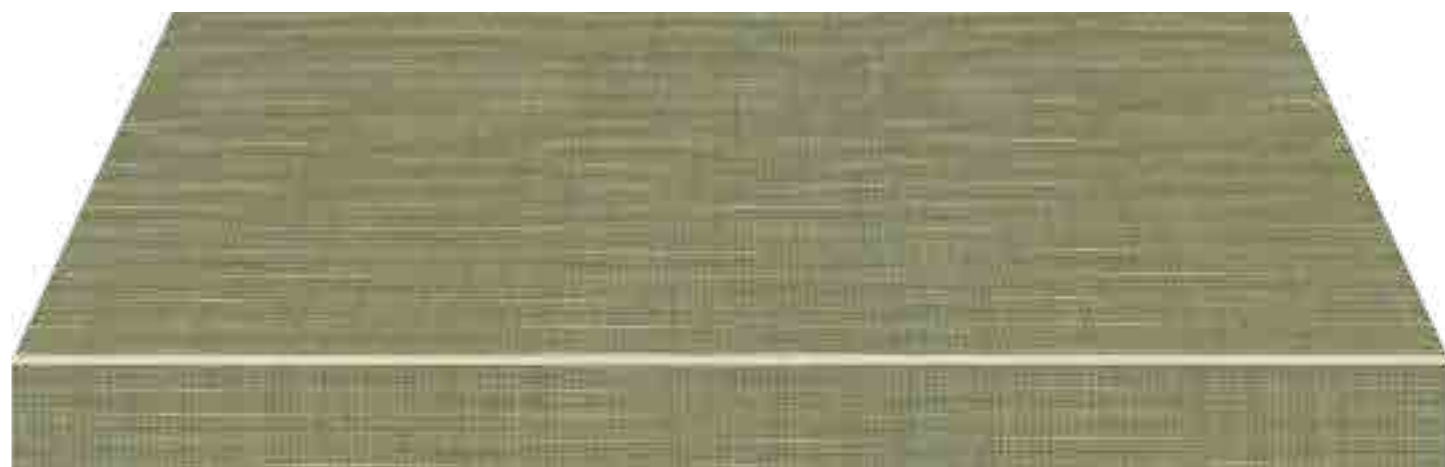
Item no.: 1330/504 | Recommended edging tape: 58 | Fabric width: 120 cm



Item no.: 1330/508
Recommended edging tape: 94
Fabric width: 120 cm



Item no.: 1330/506
Recommended edging tape: 94
Fabric width: 120 cm



Item no.: 1330/510 | Recommended edging tape: 7 | Fabric width: 120 cm



Item no.: 1330/512
Recommended edging tape: 300 815
Fabric width: 120 cm

Pastel and nature

Ease, vibrancy, sunshine – pastel and light natural shades bring a touch of summer freshness and thus a feather-light attitude to life on your terrace. Soft shades of rosé correspond with the blossoms in the garden. Green spreads a natural flair. Kind shades of sand and beige create a harmoniously relaxed ambience. Enjoy all the charm of summer under your awning fabric from LEINER.





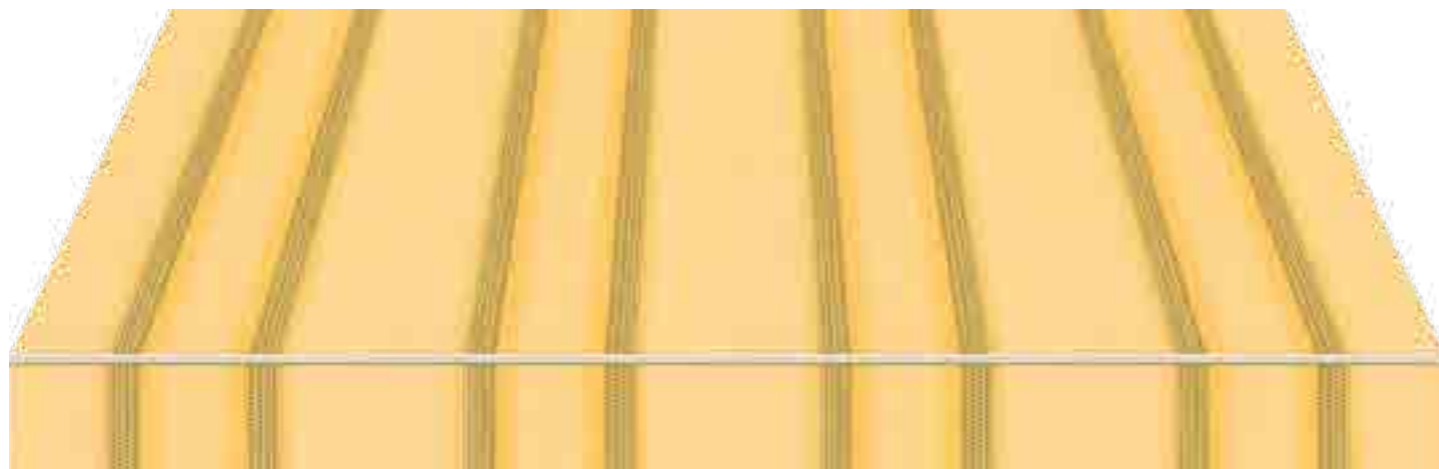
Item no.: 5396/73 | Recommended edging tape: 79 | Fabric width: 120 cm



Item no.: 5398/73 | Recommended edging tape: 79 | Fabric width: 120 cm



Item no.: 873/73 | Recommended edging tape: 79 | Fabric width: 120 cm



Item no.: 5397/12 | Recommended edging tape: 14 | Fabric width: 120 cm



Item no.: 5398/12 | Recommended edging tape: 14 | Fabric width: 120 cm



Item no.: 5396/930 | Recommended edging tape: 929 | Fabric width: 120 cm



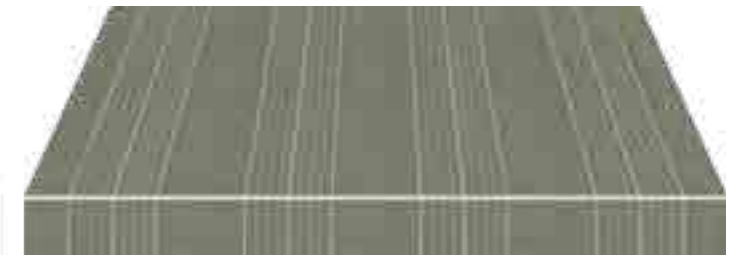
Item no.: 5397/930 | Recommended edging tape: 15/1 | Fabric width: 120 cm



Item no.: 5398/930 | Recommended edging tape: 15/1 | Fabric width: 120 cm



Item no.: 873/151 | Recommended edging tape: 15/1 | Fabric width: 120 cm



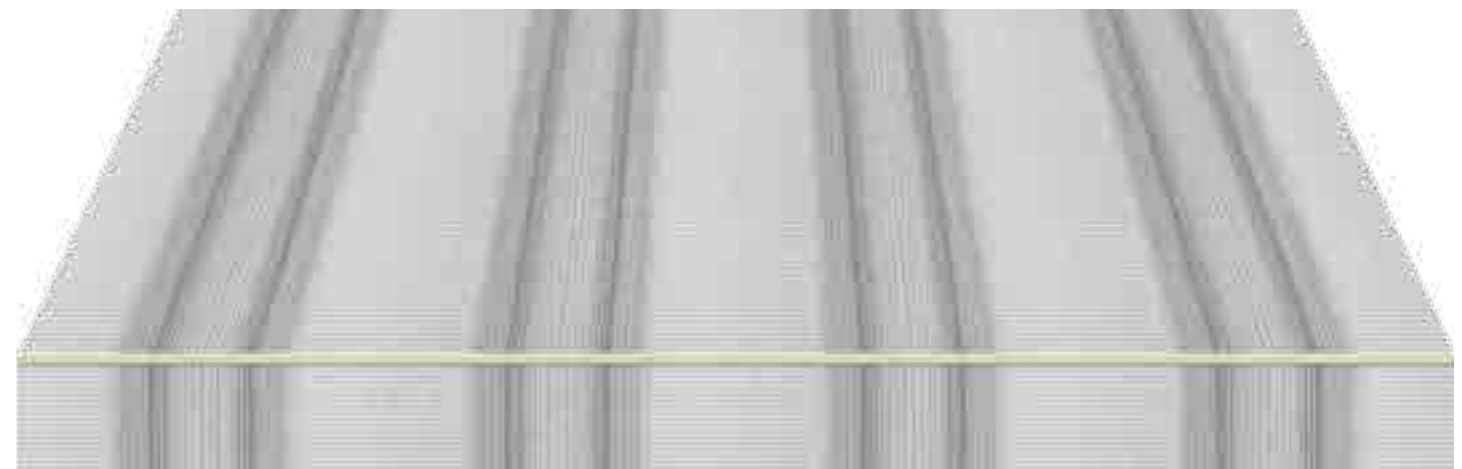
Item no.: 5396/78 | Recommended edging tape: 79 | Fabric width: 120 cm



Item no.: 5398/78 | Recommended edging tape: 79 | Fabric width: 120 cm



Item no.: 873/78 | Recommended edging tape: 79 | Fabric width: 120 cm



Item no.: 5397/97 | Recommended edging tape: 79 | Fabric width: 120 cm



Item no.: 5396/97 | Recommended edging tape: 79 | Fabric width: 120 cm



Item no.: 5398/97 | Recommended edging tape: 79 | Fabric width: 120 cm



Item no.: 873/15 | Recommended edging tape: 79 | Fabric width: 120 cm

From yellow to red

Is there any tone, that suits an awning better than the colour of the sun? From bright yellow and brilliant orange to vibrant red. Yellow is the lightest colour. It is stimulating, cheerful and weightless. It pleasantly softens the blinding sunlight without foregoing summer luminosity. As a mix of red and yellow, orange symbolizes warmth and light. It signals carefreeness and drive. Fiery red stimulates and animates you. It spends energy and vitality.





Item no.: 314 583
Recommended edging tape: 12
Fabric width: 120 cm



Item no.: 314 724
Recommended edging tape: 12
Fabric width: 120 cm



Item no.: 314 045
Recommended edging tape: 58
Fabric width: 120 cm



Item no.: 314 034
Recommended edging tape: 14
Fabric width: 120 cm



Item no.: 12
Recommended edging tape: 12
Fabric width: 120 cm



Item no.: 407/9
Recommended edging tape: 55
Fabric width: 120 cm



Item no.: 407/8
Recommended edging tape: 54
Fabric width: 120 cm



Item no.: 72
Recommended edging tape: 72
Fabric width: 120 cm



Item no.: 426
Recommended edging tape: 84
Fabric width: 120 cm



Item no.: 56
Recommended edging tape: 56
Fabric width: 120 cm



Item no.: 11
Recommended edging tape: 11
Fabric width: 120 cm



Item no.: 407/11
Recommended edging tape: 24
Fabric width: 120 cm



Item no.: 73
Recommended edging tape: 73
Fabric width: 120 cm



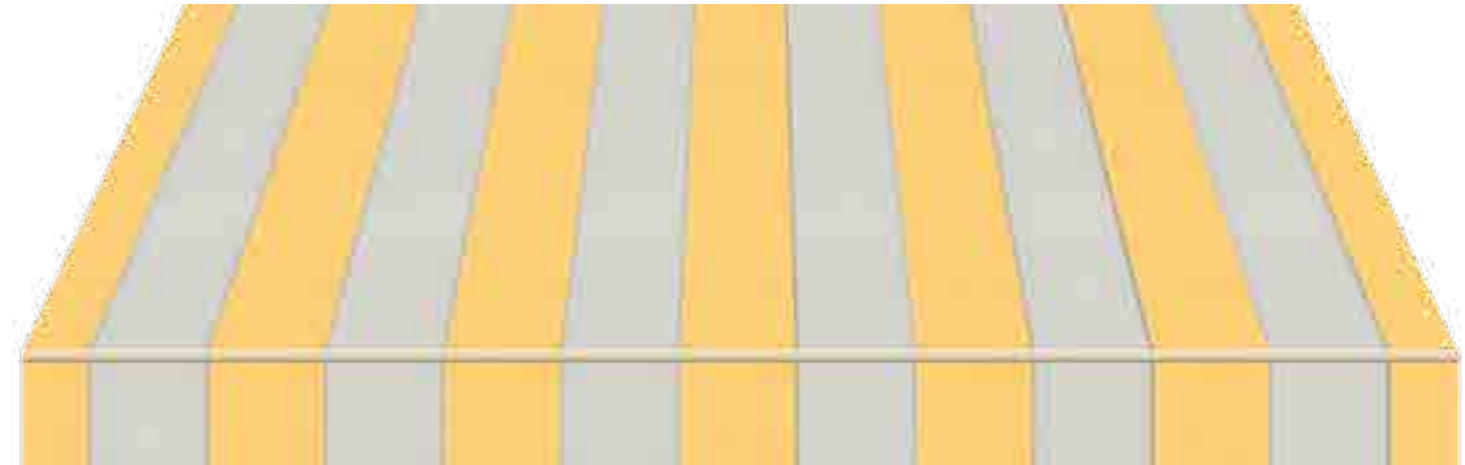
Item no.: 315 052
Recommended edging tape: 12
Fabric width: 120 cm



Item no.: 35
Recommended edging tape: 15
Fabric width: 120 cm



Item no.: 932
Recommended edging tape: 93
Fabric width: 120 cm



Item no.: 5173/12 | Recommended edging tape: 79 | Fabric width: 120 cm



Item no.: 320 932 | Recommended edging tape: 12 | Fabric width: 120 cm



Item no.: 5231/12 | Recommended edging tape: 12 | Fabric width: 120 cm



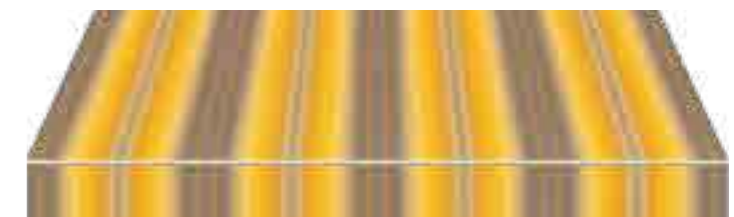
Item no.: 30A 774 | Recommended edging tape: 12 | Fabric width: 120 cm



Item no.: 30A 554 | Recommended edging tape: 12 | Fabric width: 120 cm



Item no.: 1313/1 | Recommended edging tape: 929 | Fabric width: 120 cm



Item no.: 944/926 | Recommended edging tape: 94 | Fabric width: 120 cm

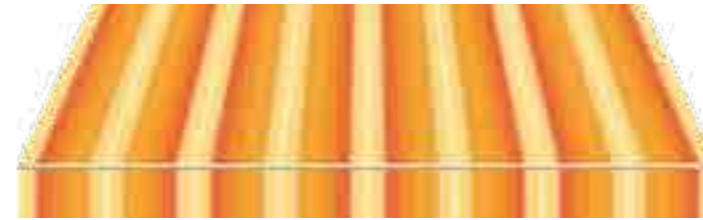
From yellow to red



Item no.: 5001/12 | Recommended edging tape: 12 | Fabric width: 120 cm



Item no.: 320227 | Recommended edging tape: 12 | Fabric width: 120 cm



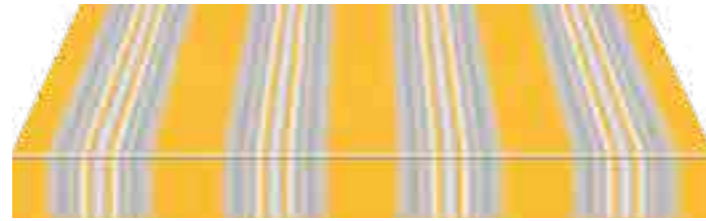
Item no.: 943/72 | Recommended edging tape: 72 | Fabric width: 120 cm



Item no.: 338323 | Recommended edging tape: 72 | Fabric width: 120 cm



Item no.: 5167/12 | Recommended edging tape: 12 | Fabric width: 120 cm



Item no.: 636/12 | Recommended edging tape: 79 | Fabric width: 120 cm



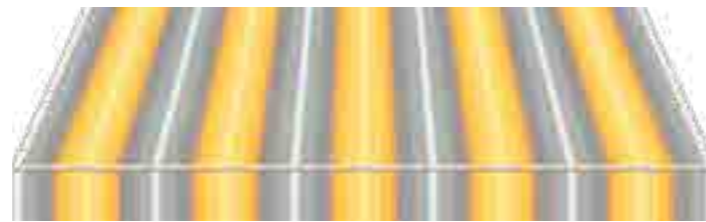
Item no.: 320328 | Recommended edging tape: 55 | Fabric width: 120 cm



Item no.: 30A778 | Recommended edging tape: 84 | Fabric width: 120 cm



Item no.: 320254 | Recommended edging tape: 12 | Fabric width: 120 cm



Item no.: 773/94 | Recommended edging tape: 94 | Fabric width: 120 cm



Item no.: 5399/55 | Recommended edging tape: 55 | Fabric width: 120 cm



Item no.: 770/55 | Recommended edging tape: 12 | Fabric width: 120 cm



Item no.: 320679 | Recommended edging tape: 54 | Fabric width: 120 cm



Item no.: 5399/73 | Recommended edging tape: 84 | Fabric width: 120 cm



Item no.: 320180 | Recommended edging tape: 12 | Fabric width: 120 cm



Item no.: 320452 | Recommended edging tape: 12 | Fabric width: 120 cm



Item no.: 5011/11 | Recommended edging tape: 52 | Fabric width: 120 cm



Item no.: 320758 | Recommended edging tape: 73 | Fabric width: 120 cm

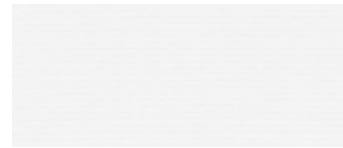
From yellow to red

From grey to brown

Whether silver-grey, light grey or anthracite – thanks to awning fabrics in grey tones, your terrace gets a timeless and elegant touch. Grey goes just as well with classical buildings as with a modern and cubic architecture. It makes other colours shine, while itself stays puristic and gentle. Colours like sand and soil convince with their natural look and cosy appeal. The warm colours create a homely atmosphere.



From grey to brown



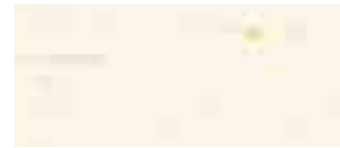
Item no.: 15
Recommended edging tape: 15
Fabric width: 120 cm



Item no.: 314 723
Recommended edging tape: 15
Fabric width: 120 cm



Item no.: 314 018
Recommended edging tape: 79
Fabric width: 120 cm



Item no.: 4015/61
Recommended edging tape: 12
Fabric width: 120 cm



Item no.: 4015/91
Recommended edging tape: 81
Fabric width: 120 cm



Item no.: 15/14
Recommended edging tape: 929
Fabric width: 120 cm



Item no.: 986/15
Recommended edging tape: 79
Fabric width: 120 cm



Item no.: 15/79
Recommended edging tape: 79
Fabric width: 120 cm



Item no.: 314 030
Recommended edging tape: 79
Fabric width: 120 cm



Item no.: 314 080
Recommended edging tape: 79
Fabric width: 120 cm



Item no.: 314 364
Recommended edging tape: 79
Fabric width: 120 cm



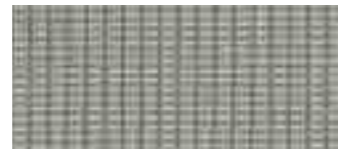
Item no.: 407/94
Recommended edging tape: 79
Fabric width: 120 cm



Item no.: 314 028
Recommended edging tape: 79
Fabric width: 120 cm



Item no.: 320 937
Recommended edging tape: 300 815
Fabric width: 120 cm



Item no.: 320 923
Recommended edging tape: 926
Fabric width: 120 cm



Item no.: 986/727 | Recommended edging tape: 79 | Fabric width: 120 cm

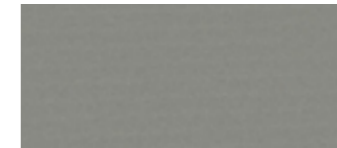
From grey to brown



Item no.: 79
Recommended edging tape: 79
Fabric width: 120 cm



Item no.: 94/15
Recommended edging tape: 94
Fabric width: 120 cm



Item no.: 338 812
Recommended edging tape: 300 815
Fabric width: 120 cm



Item no.: 314 638
Recommended edging tape: 24
Fabric width: 120 cm



Item no.: 97
Recommended edging tape: 97
Fabric width: 120 cm



Item no.: 314 033
Recommended edging tape: 93
Fabric width: 120 cm



Item no.: 314 814
Recommended edging tape: 14
Fabric width: 120 cm



Item no.: 4215/15
Recommended edging tape: 52
Fabric width: 120 cm



Item no.: 782/14
Recommended edging tape: 14
Fabric width: 120 cm



Item no.: 407/926
Recommended edging tape: 926
Fabric width: 120 cm



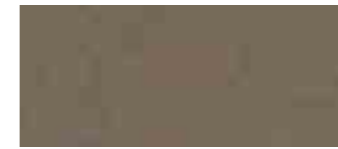
Item no.: 314 085
Recommended edging tape: 94
Fabric width: 120 cm



Item no.: 407/14
Recommended edging tape: 14
Fabric width: 120 cm



Item no.: 314 403
Recommended edging tape: 81
Fabric width: 120 cm



Item no.: 314 072
Recommended edging tape: 81
Fabric width: 120 cm



Item no.: 314 402
Recommended edging tape: 24
Fabric width: 120 cm



Item no.: 320 993
Recommended edging tape: 79
Fabric width: 120 cm



Item no.: 320 990
Recommended edging tape: 52
Fabric width: 120 cm



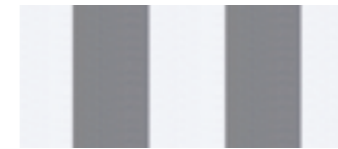
Item no.: 320 991
Recommended edging tape: 58
Fabric width: 120 cm



Item no.: 320 992
Recommended edging tape: 926
Fabric width: 120 cm



Item no.: 242
Recommended edging tape: 15
Fabric width: 120 cm



Item no.: 315 352
Recommended edging tape: 15
Fabric width: 120 cm



Item no.: 315 711
Recommended edging tape: 15
Fabric width: 120 cm



Item no.: 315 404
Recommended edging tape: 97
Fabric width: 120 cm

From grey to brown

From grey to brown



Item no.: 320 954 | Recommended edging tape: 300 815 | Fabric width: 120 cm



Item no.: 5374 | Recommended edging tape: 79 | Fabric width: 120 cm



Item no.: 5228/79 | Recommended edging tape: 79 | Fabric width: 120 cm



Item no.: 633/79 | Recommended edging tape: 15 | Fabric width: 120 cm



Item no.: 937 | Recommended edging tape: 15 | Fabric width: 120 cm



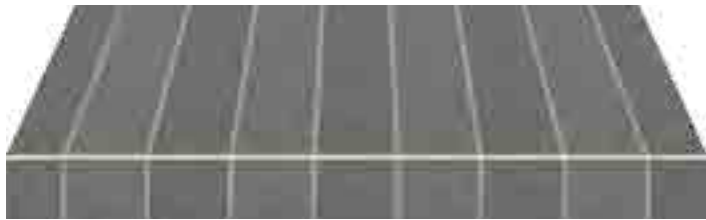
Item no.: 5399/15 | Recommended edging tape: 79 | Fabric width: 120 cm



Item no.: 939/94 | Recommended edging tape: 94 | Fabric width: 120 cm



Item no.: 639/99 | Recommended edging tape: 57 | Fabric width: 120 cm



Item no.: 5399/107 | Recommended edging tape: 300 815 | Fabric width: 120 cm



Item no.: 5399/94 | Recommended edging tape: 926 | Fabric width: 120 cm



Item no.: 320 705 | Recommended edging tape: 929 | Fabric width: 120 cm



Item no.: 320 706 | Recommended edging tape: 929 | Fabric width: 120 cm



Item no.: 967/926 | Recommended edging tape: 926 | Fabric width: 120 cm



Item no.: 320 974 | Recommended edging tape: 300 815 | Fabric width: 120 cm



Item no.: 364 053 | Recommended edging tape: 79 | Fabric width: 120 cm



Item no.: 364 064 | Recommended edging tape: 929 | Fabric width: 120 cm



Item no.: 338 801 | Recommended edging tape: 300 815 | Fabric width: 120 cm



Item no.: 338 802 | Recommended edging tape: 79 | Fabric width: 120 cm



Item no.: 320 678 | Recommended edging tape: 72 | Fabric width: 120 cm

From green to blue

Apple-green, fir green, reseda green – green tones symbolize nature and life, growth and freshness. So they fit excellently on a terrace and form the perfect transition from the garden into the living area. At the same time, they have a calming and relaxing effect. A cool blue creates tranquility. Combined with grey you will get elegant tone-in-tone integrations. If you shade blue with red, you will get purple and also extravagance on your terrace.



From green to blue



Item no.: 314 061
Recommended edging tape: 5
Fabric width: 120 cm



Item no.: 16
Recommended edging tape: 7
Fabric width: 120 cm



Item no.: 314 396
Recommended edging tape: 5
Fabric width: 120 cm



Item no.: 314 362
Recommended edging tape: 5
Fabric width: 120 cm



Item no.: 314 050
Recommended edging tape: 79
Fabric width: 120 cm



Item no.: 314 051
Recommended edging tape: 87
Fabric width: 120 cm



Item no.: 13
Recommended edging tape: 13
Fabric width: 120 cm



Item no.: 75
Recommended edging tape: 75
Fabric width: 120 cm



Item no.: 315 602
Recommended edging tape: 15
Fabric width: 120 cm



Item no.: 315 420
Recommended edging tape: 5
Fabric width: 120 cm

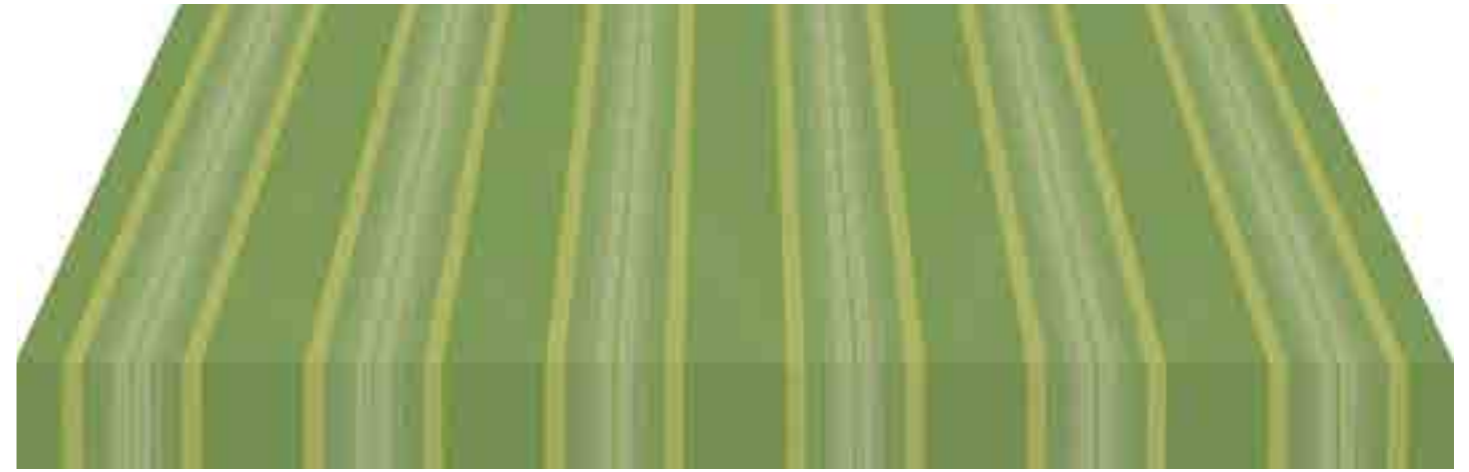


Item no.: 315 422
Recommended edging tape: 13
Fabric width: 120 cm



Item no.: 338 612 | Recommended edging tape: 6 | Fabric width: 120 cm

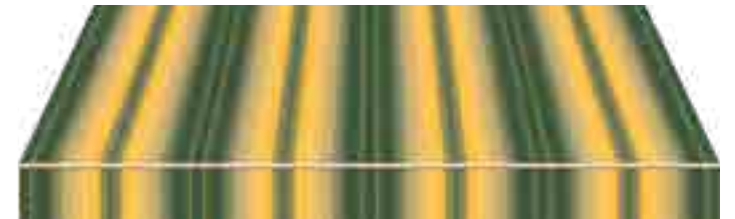
From green to blue



Item no.: 320 674 | Recommended edging tape: 15/1 | Fabric width: 120 cm



Item no.: 320 B70 | Recommended edging tape: 7 | Fabric width: 120 cm



Item no.: 944/5 | Recommended edging tape: 5 | Fabric width: 120 cm



Item no.: 320 926 | Recommended edging tape: 87 | Fabric width: 120 cm



Item no.: 320 955 | Recommended edging tape: 300 815 | Fabric width: 120 cm



Item no.: 320 235 | Recommended edging tape: 10 | Fabric width: 120 cm



Item no.: 320 573 | Recommended edging tape: 79 | Fabric width: 120 cm



Our fabric awnings made of 100 % solution dyed polyester fit especially with extensive folding arm awnings. They are thinner and slightly lighter than normal polyacrylic fabrics. The advantage: a strong resilience and a high resistance to deformation and traction. So they tend less to distension and are characterized by less wrinkling.



Area of application

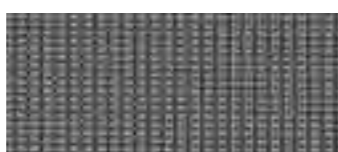
- Extensive folding arm awnings
- Conservatory shadings
- Window awnings
- Side awnings



Item no.: 6231/197
Recommended edging tape: 79
Fabric width: 120 cm



Item no.: 6873/197
Recommended edging tape: 300 815
Fabric width: 120 cm



Item no.: 6233/124
Recommended edging tape: 97
Fabric width: 120 cm



Item no.: 6002/100
Recommended edging tape: 79
Fabric width: 120 cm



Item no.: 6079/100
Recommended edging tape: 94
Fabric width: 120 cm



Item no.: 6097/100
Recommended edging tape: 97
Fabric width: 120 cm



Item no.: 6015/100
Recommended edging tape: 15
Fabric width: 120 cm



Item no.: 6015/151
Recommended edging tape: 15/1
Fabric width: 120 cm



Item no.: 6015/101
Recommended edging tape: 93
Fabric width: 120 cm



Item no.: 6929/100
Recommended edging tape: 926
Fabric width: 120 cm



Item no.: 6052/100
Recommended edging tape: 926
Fabric width: 120 cm



Item no.: 6236/190
Recommended edging tape: 926
Fabric width: 120 cm



Item no.: 6248/190
Recommended edging tape: 926
Fabric width: 120 cm



Item no.: 6016/115
Recommended edging tape: 7
Fabric width: 120 cm



Item no.: 6247/108
Recommended edging tape: 5
Fabric width: 120 cm



Item no.: 6005/100
Recommended edging tape: 5
Fabric width: 120 cm



Item no.: 370 519
Recommended edging tape: 75
Fabric width: 120 cm



Item no.: 6073/100
Recommended edging tape: 73
Fabric width: 120 cm



Item no.: 6011/100
Recommended edging tape: 73
Fabric width: 120 cm



Item no.: 6084/100
Recommended edging tape: 84
Fabric width: 120 cm



Item no.: 6055/100
Recommended edging tape: 55
Fabric width: 120 cm



Item no.: 6012/100
Recommended edging tape: 12
Fabric width: 120 cm



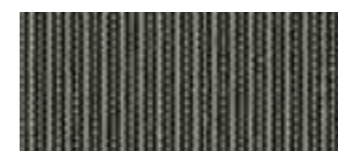
Item no.: 6243/112
Recommended edging tape: 12
Fabric width: 120 cm



Item no.: 370 203
Recommended edging tape: 12
Fabric width: 120 cm



Item no.: 370 803
Recommended edging tape: 79
Fabric width: 120 cm



Item no.: 370 903
Recommended edging tape: 97
Fabric width: 120 cm



Item no.: 370 703
Recommended edging tape: 929
Fabric width: 120 cm



Item no.: 370 804
Recommended edging tape: 94
Fabric width: 120 cm



Item no.: 370 902 | Recommended edging tape: 300 815 | Fabric width: 120 cm



Item no.: 370 402 | Recommended edging tape: 300 815 | Fabric width: 120 cm



Item no.: 370 602 | Empfohlenes Einfassband: 7 | Fabric width: 120 cm



Item no.: 6239/115 | Recommended edging tape: 79 | Fabric width: 120 cm



Item no.: 6227/179 | Recommended edging tape: 79 | Fabric width: 120 cm



Item no.: 6239/185 | Recommended edging tape: 79 | Fabric width: 120 cm



Item no.: 6239/111 | Recommended edging tape: 79 | Fabric width: 120 cm



Item no.: 6239/116 | Recommended edging tape: 79 | Fabric width: 120 cm

The Précontraint fabrics are absolutely watertight and extremely stable. So they are perfectly suitable for all our SUNRAIN products, which protect against sun and rain. Furthermore these fabrics are odorless, easy to clean and also eco-friendly – thanks to their 100 % recycling capability.

Area of application

- All SUNRAIN folding arm awnings
- PERGOLA SUNRAIN
- Side awnings
- Window awnings (SD, SF, SZ)



 Item no.: PC0239 Recommended edging tape: 15 Fabric width: 180 cm	 Item no.: PC0237 Recommended edging tape: 929 Fabric width: 180 cm	 Item no.: PC0241 Recommended edging tape: 93 Fabric width: 180 cm	 Item no.: PC1093 Recommended edging tape: 52 Fabric width: 180 cm
 Item no.: PC0544 Recommended edging tape: 52 Fabric width: 180 cm	 Item no.: PC0821 Recommended edging tape: 93 Fabric width: 177 cm	 Item no.: PC0377 Recommended edging tape: 15/1 Fabric width: 180 cm	 Item no.: PC0165 Recommended edging tape: 926 Fabric width: 180 cm
 Item no.: PC0331 Recommended edging tape: 79 Fabric width: 180 cm	 Item no.: PC0400 Recommended edging tape: 79 Fabric width: 180 cm	 Item no.: PC0378 Recommended edging tape: 300 815 Fabric width: 180 cm	 Item no.: PC0405 Recommended edging tape: 24 Fabric width: 180 cm
 Item no.: PC0236 Recommended edging tape: 73 Fabric width: 180 cm	 Item no.: PC0255 Recommended edging tape: 56 Fabric width: 180 cm	 Item no.: PC0497 Recommended edging tape: 54 Fabric width: 180 cm	 Item no.: PC0496 Recommended edging tape: 58 Fabric width: 180 cm
 Item no.: PC0199 Recommended edging tape: 12 Fabric width: 180 cm	 Item no.: PC0006 Recommended edging tape: 12 Fabric width: 180 cm	 Item no.: PC0814 Recommended edging tape: 5 Fabric width: 180 cm	 Item no.: PC0001 Recommended edging tape: 13 Fabric width: 180 cm


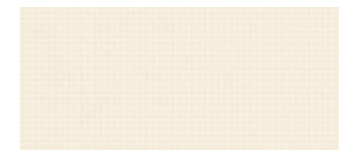



 Item no.: PC0111 Recommended edging tape: 79 Fabric width: 178 cm	 Item no.: PC0168 Recommended edging tape: 12 Fabric width: 178 cm	 Item no.: PC0510 Recommended edging tape: 93 Fabric width: 178 cm	 Item no.: PC0511 Recommended edging tape: 93 Fabric width: 178 cm
----------------------------------------------------------------------------------------------------------------------------------------------------------------	----------------------------------------------------------------------------------------------------------------------------------------------------------------	----------------------------------------------------------------------------------------------------------------------------------------------------------------	----------------------------------------------------------------------------------------------------------------------------------------------------------------

Soltis Proof W88



- Area of application**
- PERGOLA SUNRAIN

Soltis Proof W88 is a lighter and watertight fabric with a high translucency and a textured look. Thanks to the characteristics of the material, it is especially suitable for the PERGOLA SUNRAIN. Weight approx. 480 g/m².






 Item no.: S0888102 Fabric width: 267 cm	 Item no.: S0881103 Fabric width: 267 cm	 Item no.: S0888861 Fabric width: 267 cm	 Item no.: S0882171 Fabric width: 267 cm
 Item no.: S0882047 Fabric width: 267 cm			

Soltis Proof W96



- Area of application**
- PERGOLA SUNRAIN

Soltis Proof W96 is a watertight fabric with a high translucency and a textured look. Thanks to the characteristics of the material, it is especially suitable for the PERGOLA SUNRAIN. Weight approx. 600 g/m².

 Item no.: S0968102 Fabric width: 267 cm	 Item no.: S0961103 Fabric width: 267 cm	 Item no.: S0968861 Fabric width: 267 cm	 Item no.: S0962171 Fabric width: 267 cm
 Item no.: S0962047 Fabric width: 267 cm			



Area of application

- VARIO-VOLANT valance
- Window awnings
- Side awnings

TEMPOTEST STARSCREEN is a perforated polyester fabric. Therefore it is optimally suitable for window awnings and VARIO-VOLANT valances.

Thanks to the exceptional fabric width of 320 cm, „seamless“ vertical awnings (QSZ) can be realized for the installation with a Q.bus or PERGOLA SUNRAIN Q.



Item no.: 8015/400
Fabric width: 320 cm



Item no.: 8015/401
Fabric width: 320 cm



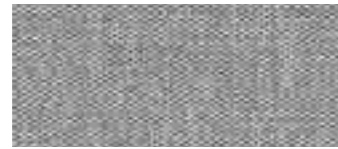
Item no.: 8090/400
Fabric width: 320 cm



Item no.: 8929/400
Fabric width: 320 cm



Item no.: 8079/400
Fabric width: 320 cm



Item no.: 8197/415
Fabric width: 320 cm



Item no.: 8097/415
Fabric width: 320 cm



Item no.: 8971/497
Fabric width: 320 cm



Item no.: 8097/400
Fabric width: 320 cm

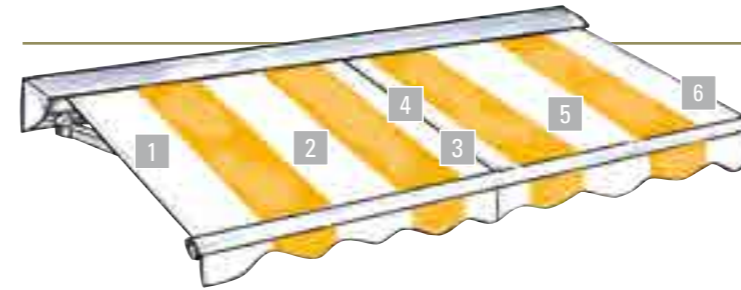


Item no.: 8073/400
Fabric width: 320 cm



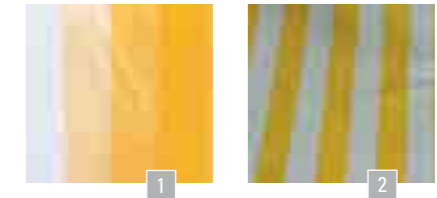
Item no.: 8027/400
Fabric width: 320 cm

Product properties of strictly controlled fabrics



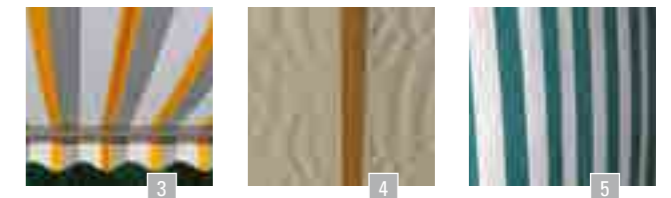
Awning fabrics are made of technical textiles, which are beside their functional tasks also decorative. They are high-tech products, which strictly meet the technical specifications. They are subject to extensive laboratory tests during each production run. Specifications like the water pressure resistance, stiffness, dirt- as well as water-repellent specifications, rip and tear resistance, colour fastness as well as many other specifications are defined, are subject to measurements and guaranteed by the weaver.

Although only first choice and controlled textiles are used for the fabric's production, there are limits to perfection. Sometimes awning owners complain about certain appearances of the fabric, which cannot be excluded with the present state of the art.



Creases

Creases occur during the manufacturing and when the fabric is folded. Especially with light colours, a dark line may be visible at the folded edge when the fabric is back lighted. This line results of the fibre's kink (light refraction).



Ripples around seams and corrugations in fabric sheets

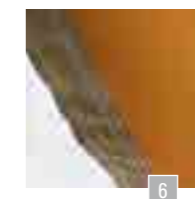
Ripples can occur along the side hems, around the seams and also in the middle of the fabric. During production, the fabric is doubled at the seams, so different winding diameters are created. The tension of the folding arms as well as the sagging of the profile increase this effect.

If the awning fabric ever built a water pocket, due to the use during rain, also ripples may occur.

Watertightness and rain fastness

Sun protection fabrics are impregnated with a hydrophobic finish. When used in accordance with the manufacturer guidelines and when mounted with an incline of at least 14 degrees, this awnings withstand a short and light drizzle.

During longer wet periods and / or heavy rain, the awning has to stay closed to avoid damage. If the fabric got wet, the awning has to be extruded for drying. Otherwise mould stains may occur.



Side track elongation

The fabric is kept taut permanently by a spring system. The seams and hems have a reinforcing effect, but must at the same time be able to withstand the highest loads. When the fabric is retracted, seams and hems lie on top of each other. Pressure and tension increase. This puts extra strain and stretches them. These forces can lead to elongation of the material and sagging side hems.



The complete guideline for the assessment of manufactured awning cloth can be found via the QR code.

abesco
Blinds & Awnings

49 Captain Cook Drive, Caringbah NSW 2229
02 9589 5900 info@abesco.com.au
abesco.com.au

